



Project:	Woodbrook Phase 1	Proj. No.:	1618
Location:	Woodbrook	Proj. Lead:	SD
Client:	Aeval	Created by:	TT
Doc. Title:	Part V Provision	Doc. Purpose:	Planning
Doc. No.:	1618-OMP-XX-XX-PP-A-90032	Revision:	1

o'mahony pike

architecture | urban design



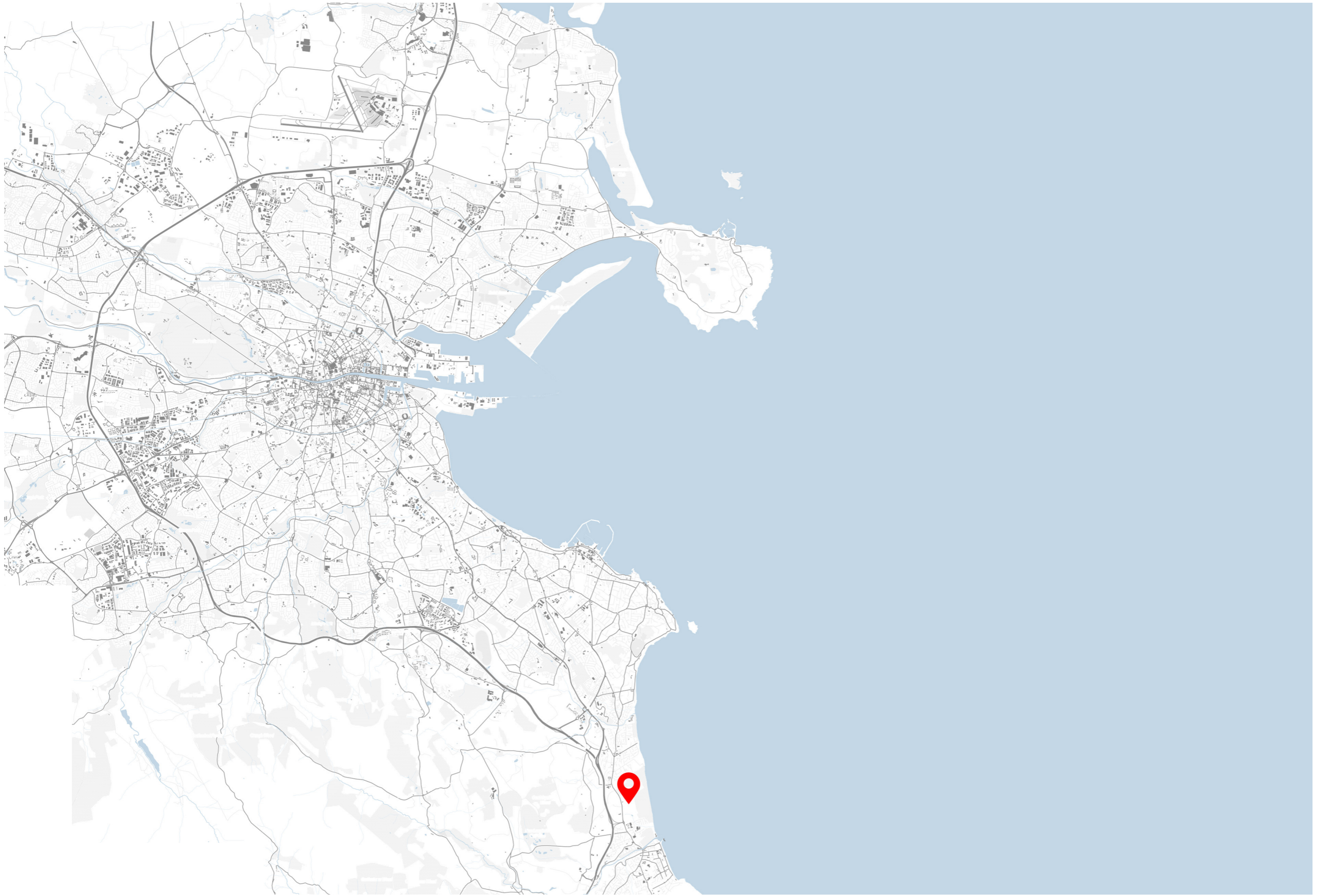
email: info@omahonypike.com
Tel: +353 1 202 7400
Fax: +353 1 283 0822
www.omahonypike.com

Dublin
The Chapel
Mount Saint Anne's
Milltown, Dublin 6
D06 XN52 Ireland
Tel: +353 1 202 7400

Cork
26 South Mall
Cork City
Co. Cork
T12 R2RV Ireland
Tel: +353 21 427 2775

Directors: Michael Hussey Dip.Arch., B.Arch.Sc., MRIAI | Conor Kinsella B.Sc.Arch., B.Arch., MRIAI | Derbhile McDonagh Dip. Arch., B.Arch.Sc., MRIAI | Orlaith O'Callaghan Dip.Arch., B.Arch.Sc. | John O'Mahony Dip.Arch., FRIAI, RIBA | James Pike, Dip. Arch., FRIAI, RIBA | Tom Sweetman Dip.Arch., B.Arch.Sc., MRIAI | Alex Schoenmakers Dip.Arch.Tech., RIAI (Arch.Tech.)

O'Mahony Pike Architects Ltd. Registered in Ireland | Reg. No. 187129 VAT Reg. No. IE6587129J

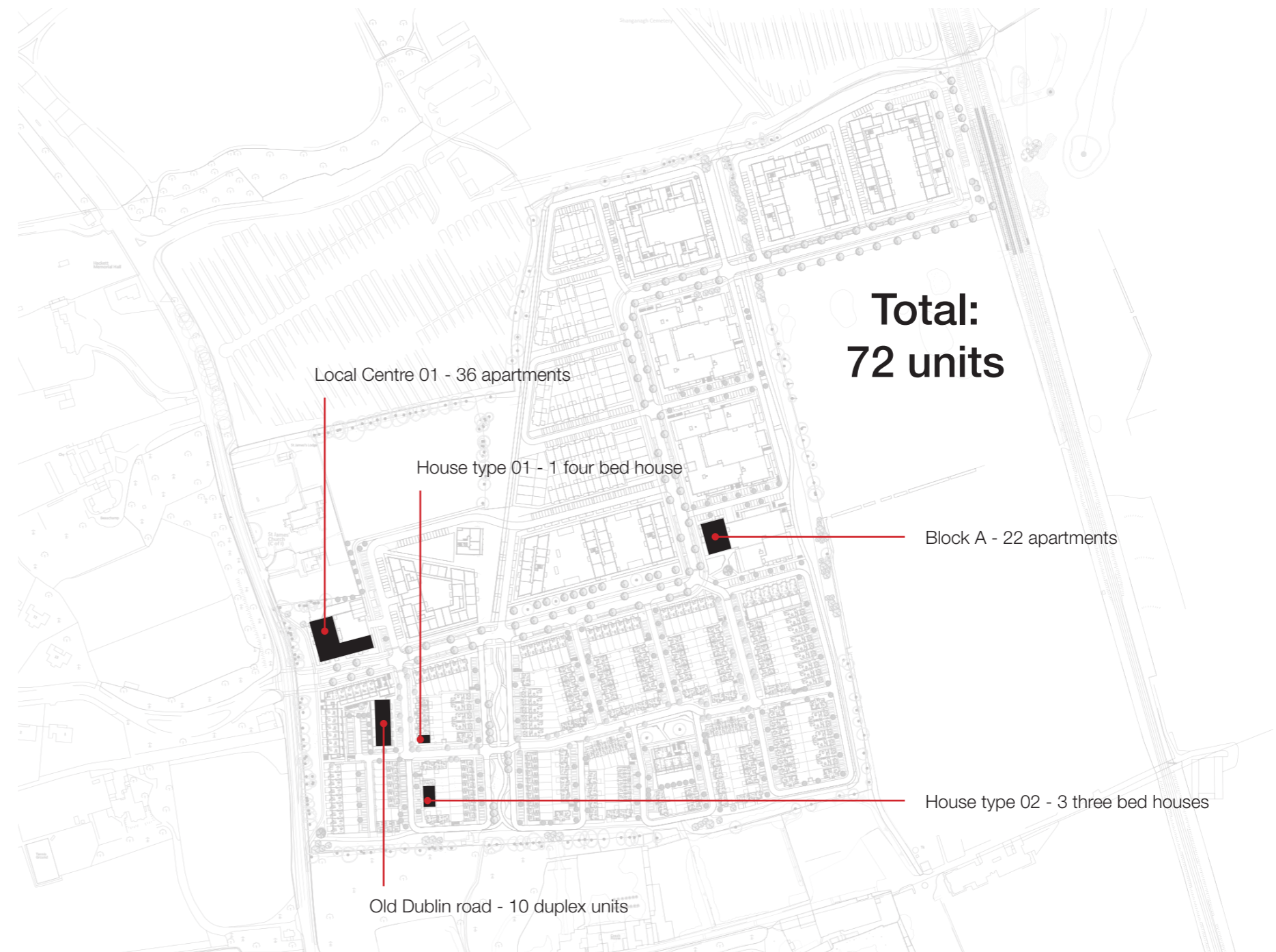


Introduction

The proposed part v requirement for the development at Woodbrook, Shankill, co. Dublin has been met by the provision of a number of unit types spread throughout the development as outlined. The units are provided in 6 areas:

- Old Dublin Road - 10 duplex units
- Old Dublin Road apartments - 36 units
- House Type 01 - 1 no. 4 bed house
- House Type 02 - 3 no. 3 bed houses
- Block A - 22 apartments

Details of all 72 units, including plans sections and elevations are provided in addition to a full schedule of accommodation.



Old Dublin Road

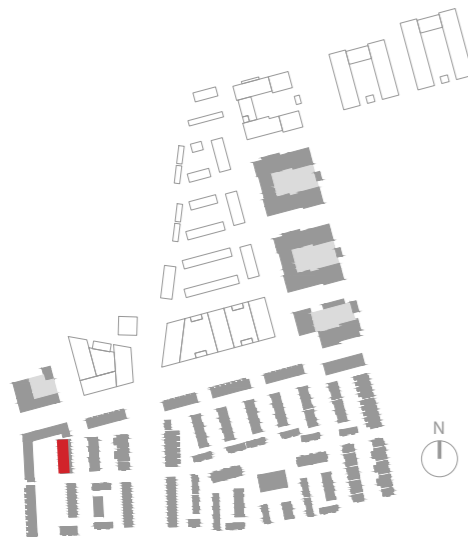
3 Storey Duplexes

10 duplex units
10 car parking spaces

Consisting:

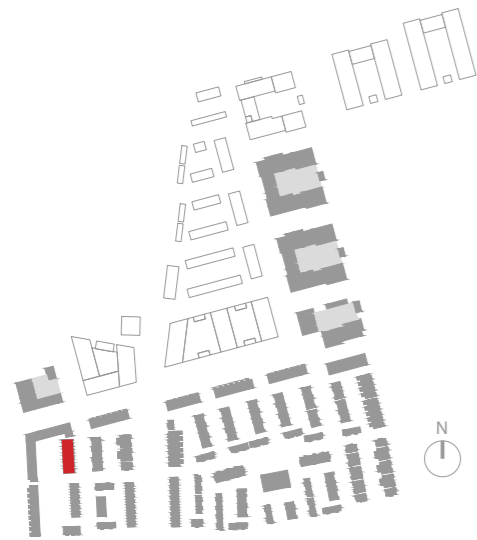
5 no. GF+1st floor units
5 no. 1st+2nd floor units

Location



3 Storey Duplexes // Floor Plans

Location

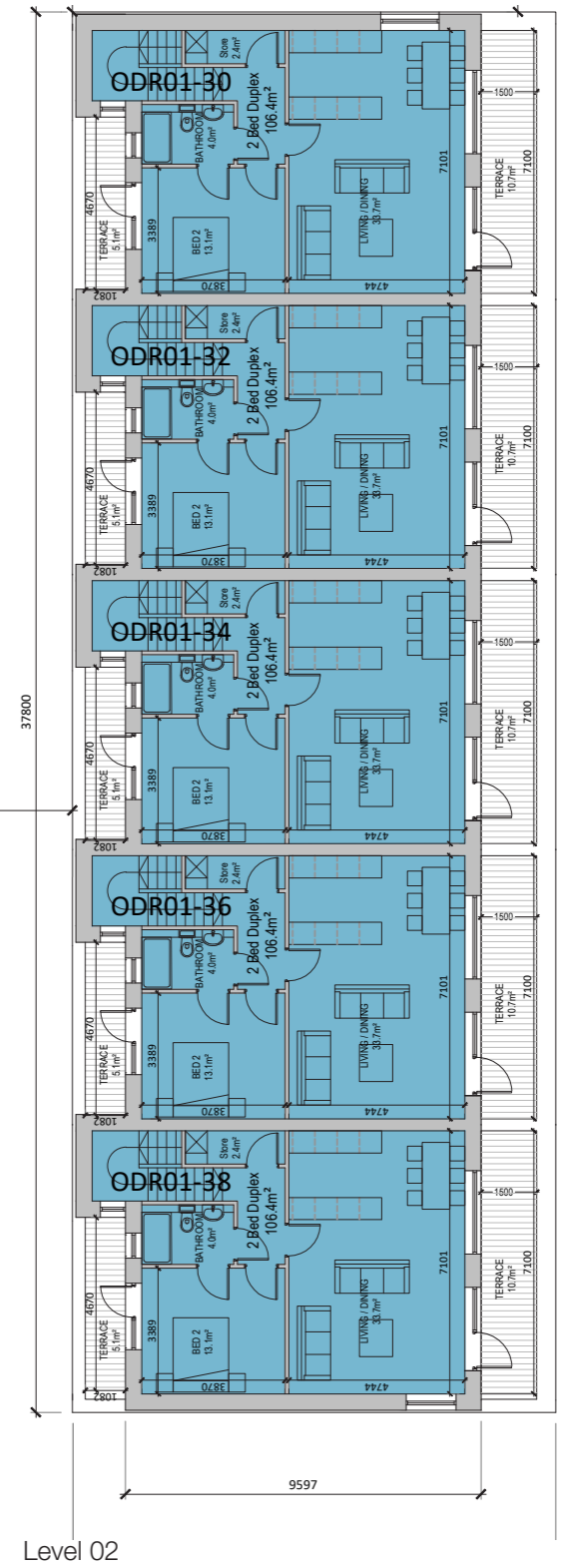
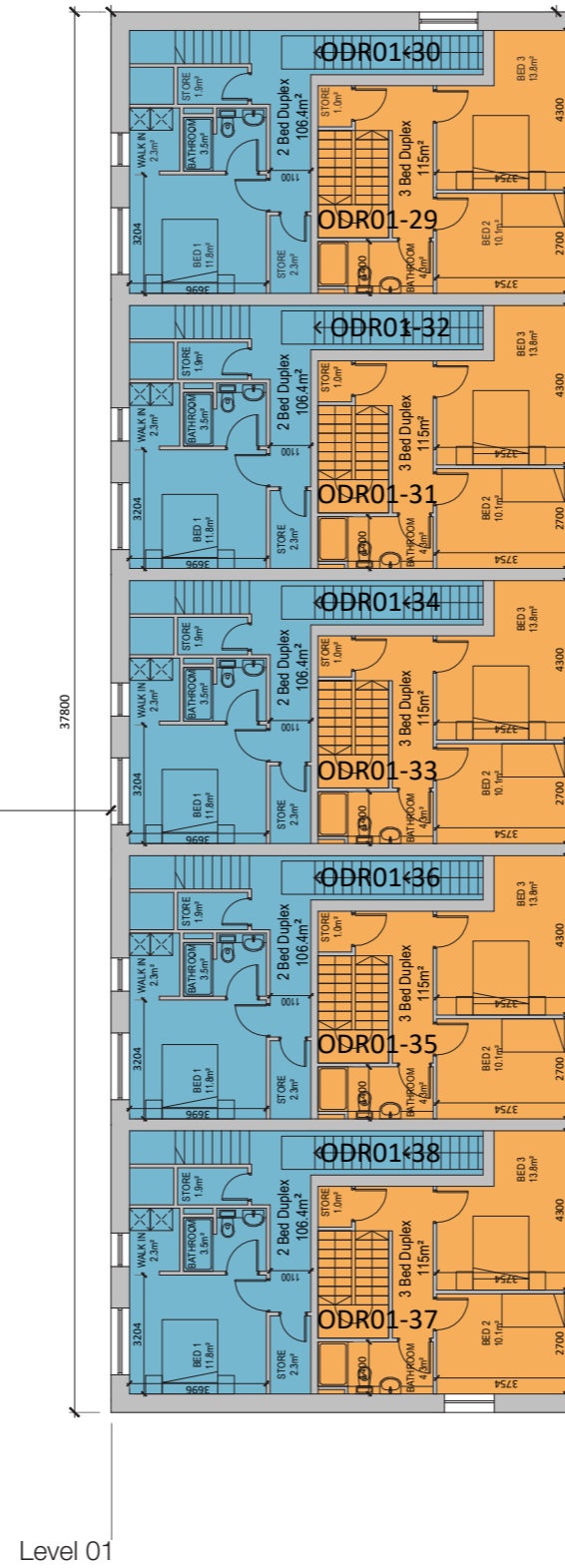
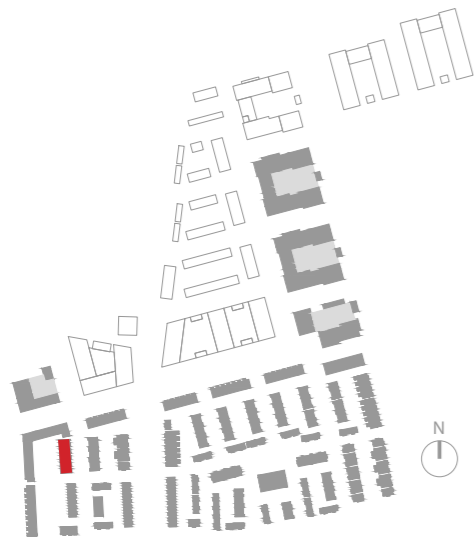


Level 00

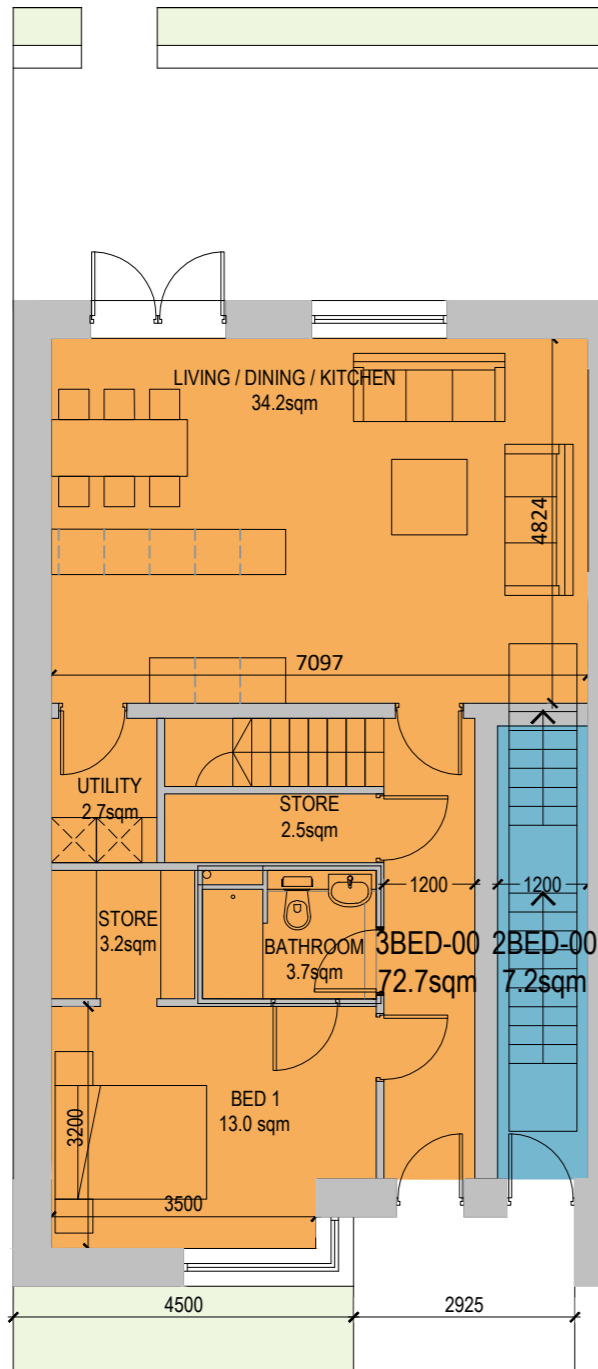


3 Storey Duplexes // Floor Plans

Location

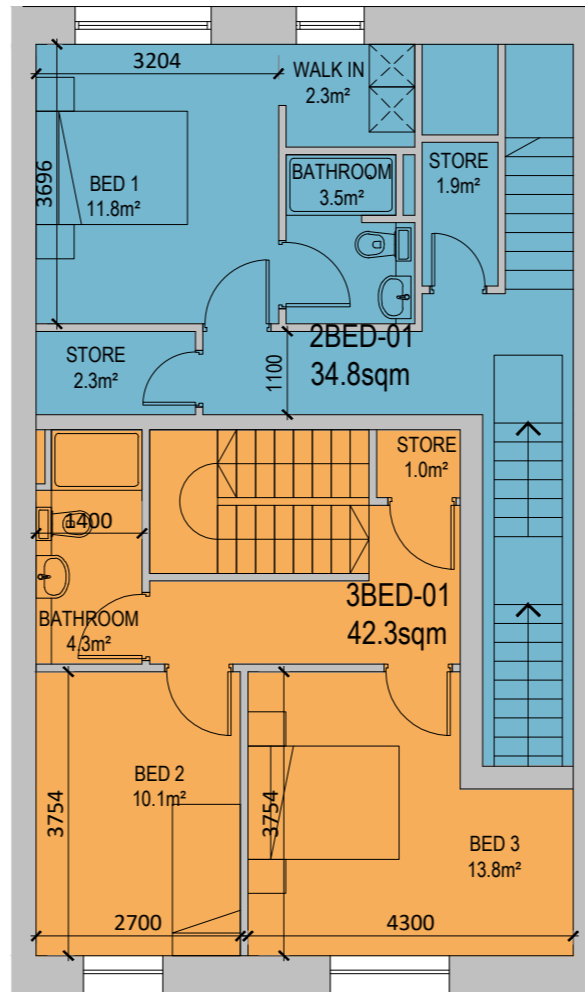


3 Storey Duplexes // Units

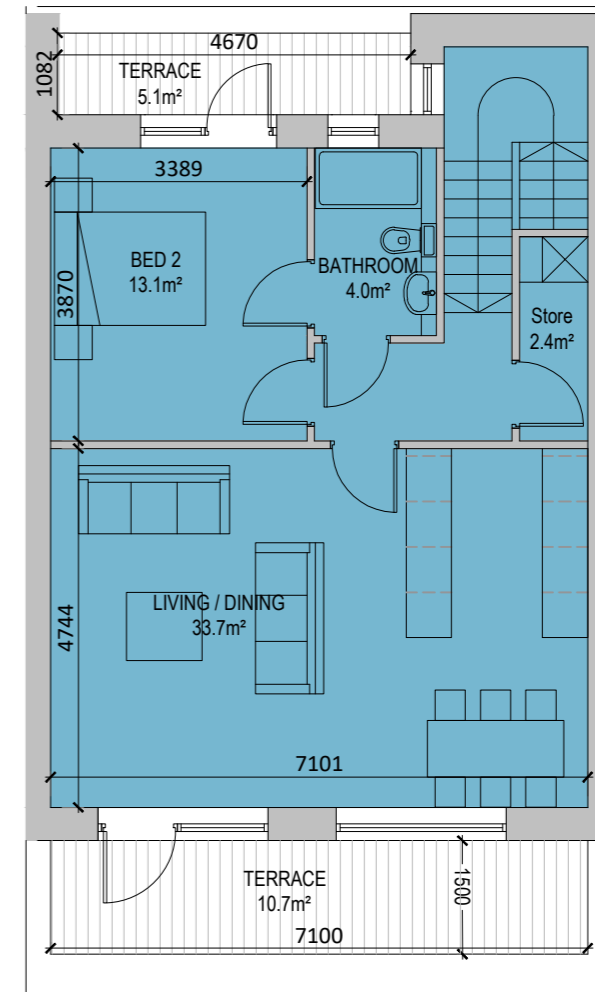


Level 00

3 Bed Apartment: 115 m²
2 Bed Apartment: 106.4 m²



Level 01

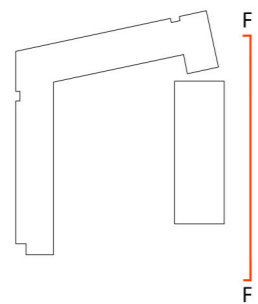


Level 02

3 Storey Duplexes // Elevations



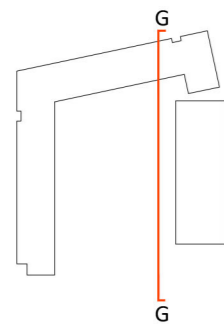
Part V Duplex Front Elevation



3 Storey Duplexes // Elevations



Part V Duplexes Rear Elevation

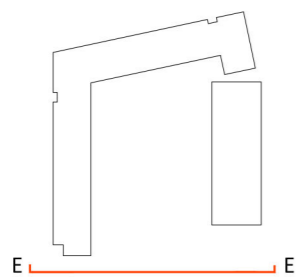


- 2 Bed Duplex
- 3 Bed Duplex

3 Storey Duplexes // Elevations



Part V Duplexes Side Elevation



3 Storey Duplexes // Elevations



Part V Duplexes Section

- 2 Bed Duplex
- 3 Bed Duplex

Old Dublin Road

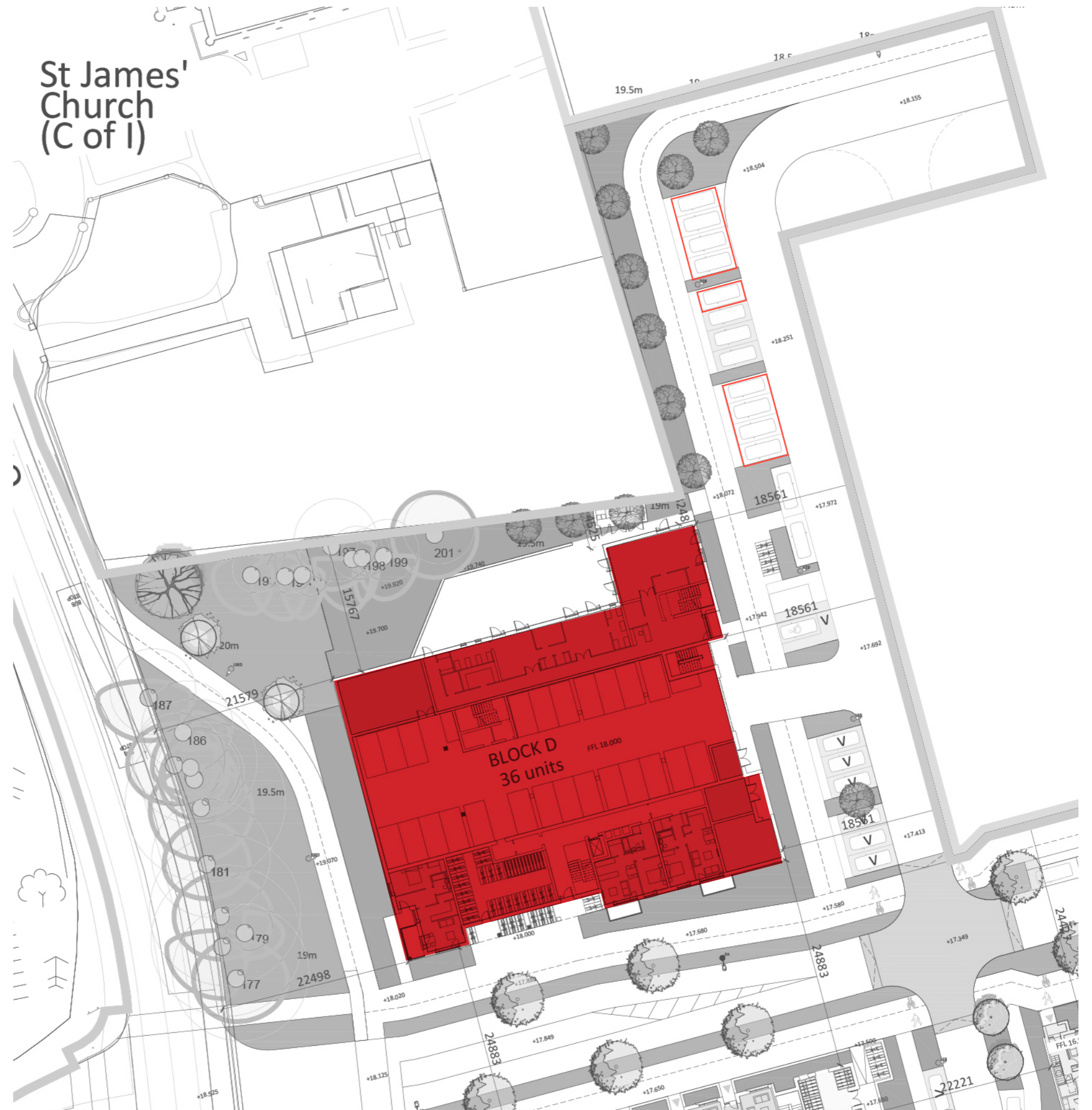
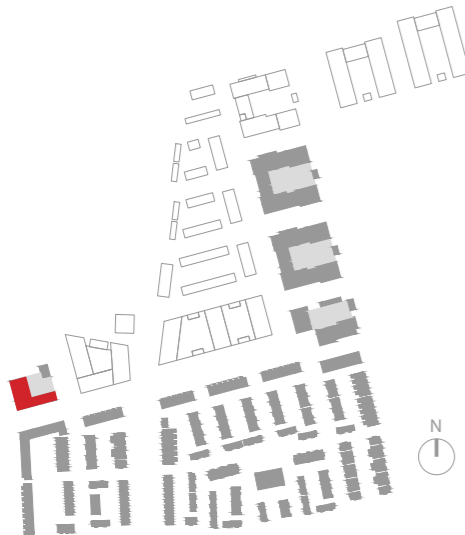
Apartments

36 apartments
24 podium car parking spaces
5 on-street car parking spaces

Consisting:

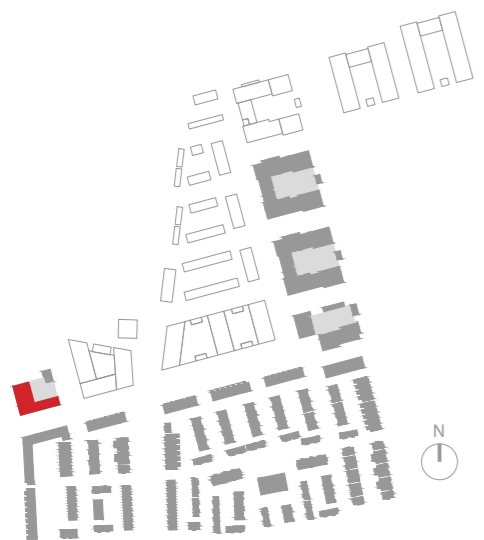
- 18 no. 2 bed 4 person units
- 13 no. 1 bed 2 person units
- 5 no. 3 bed 5 person units

Location



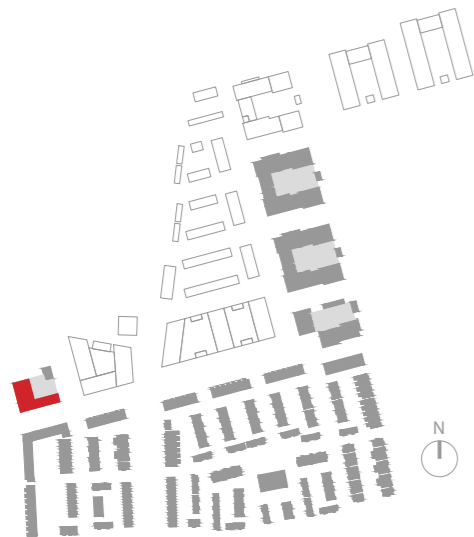


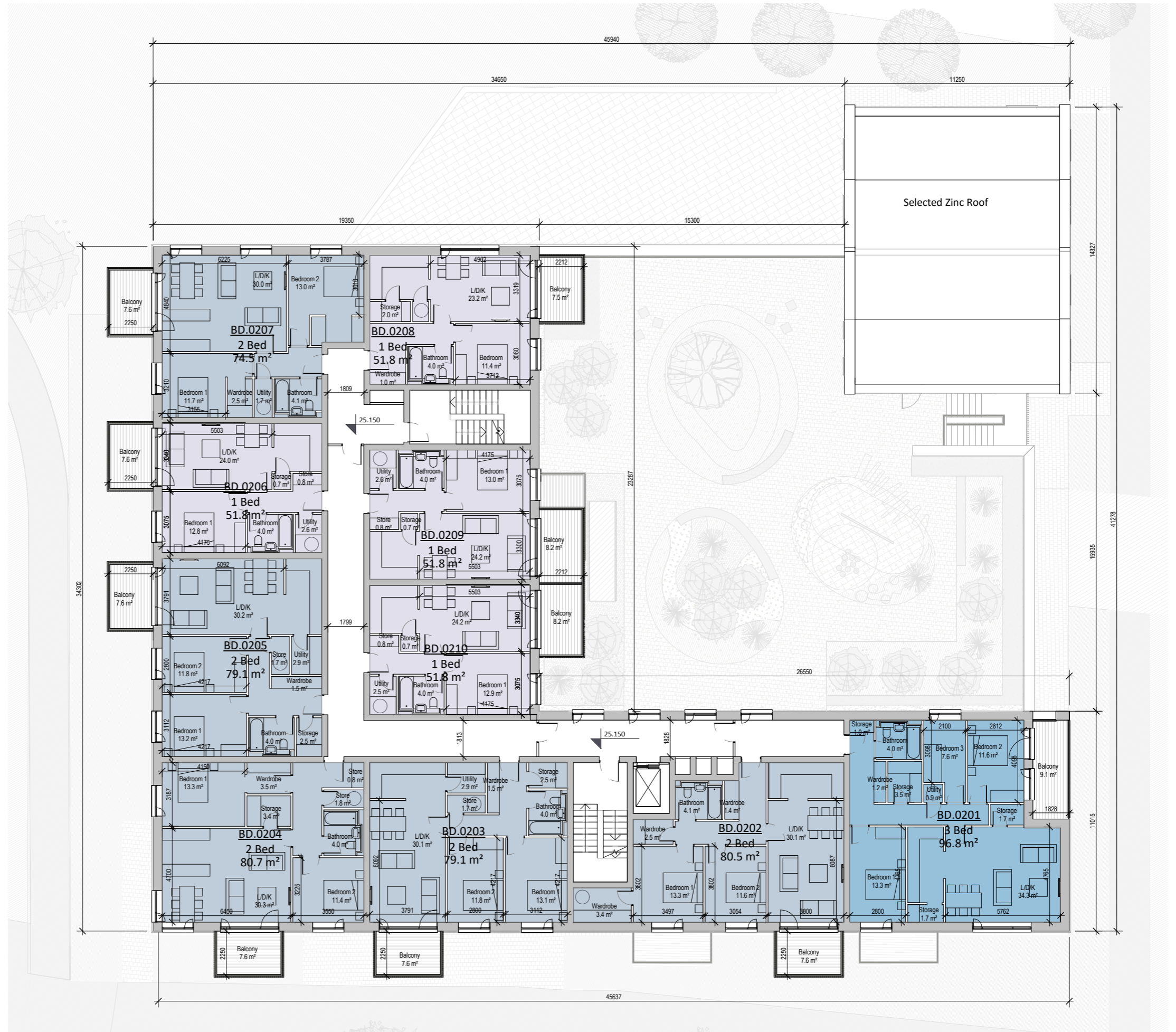
Location



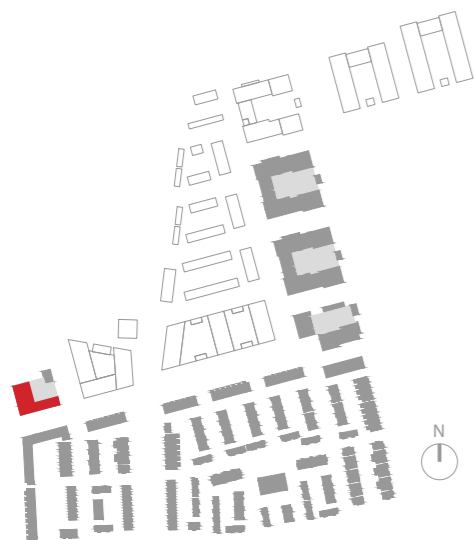


Location





Location

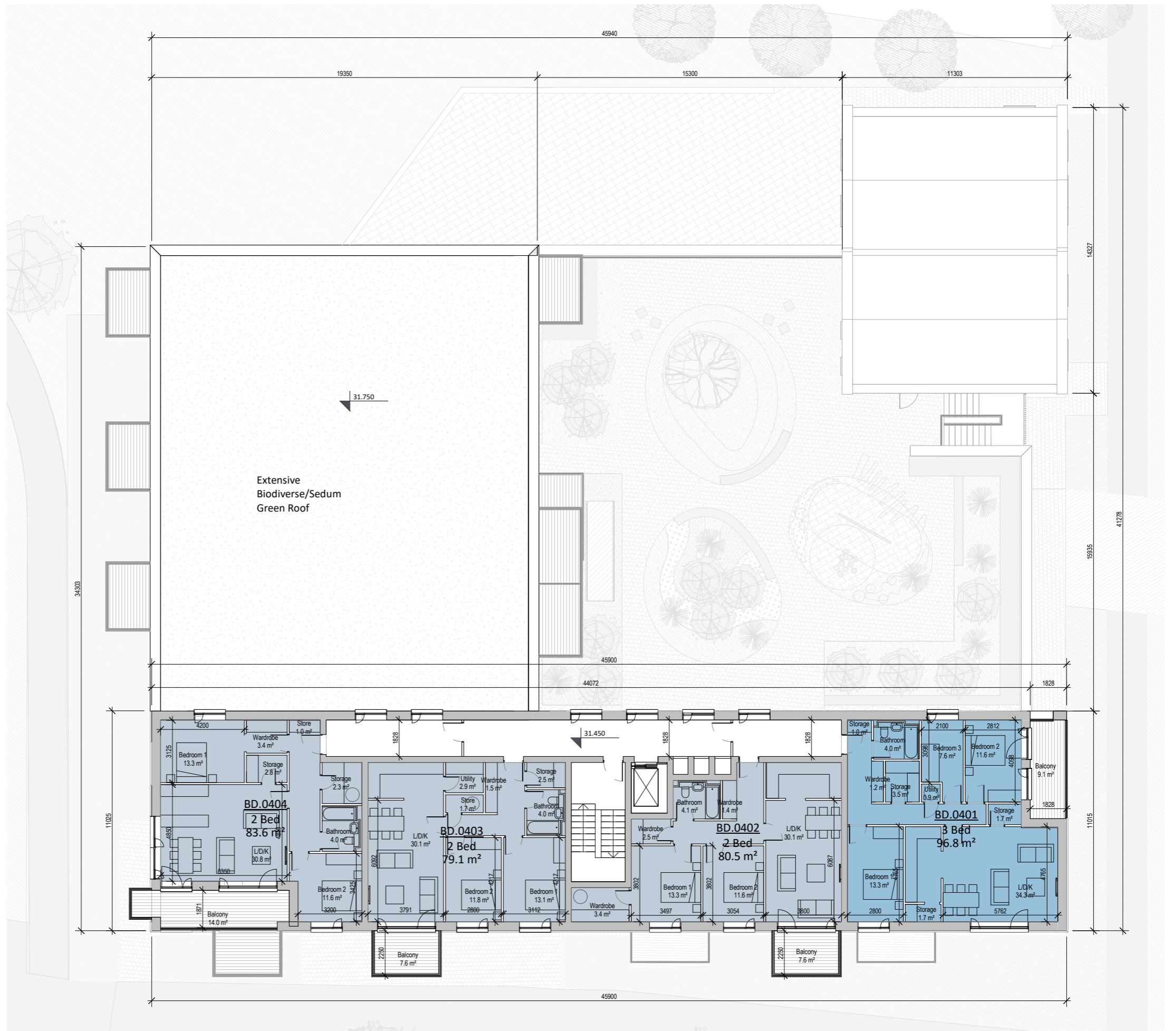
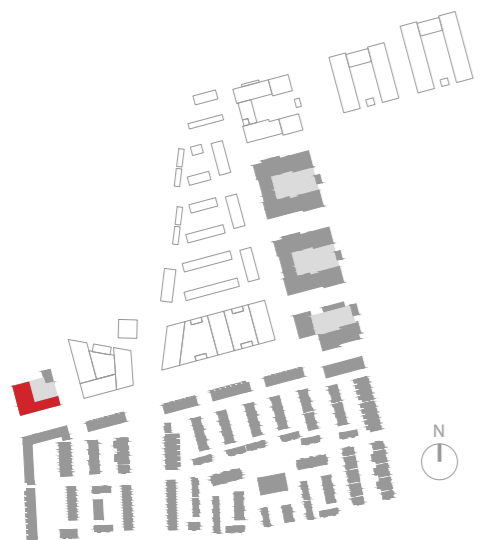


Block D // Level 04

Legend:

- 2 Bed
- 3 Bed

Location



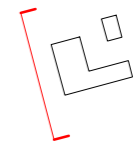
Block D // West Elevation

- 1 Brick Type A
- 2 Brick Type B
- 3 Brick Type C
- 4 Pre-Cast Frame Type A
- 5 Pre-Cast Frame Type B
- 6 Selected Render
- 7 Selected Contrasting Render
- 8 Metal Ballustrade
- 9 Double Glazed Window System with Spandrel Panel
- 10 Selected Sedum Roof
- 11 Selected Metal Ventilation Grille



3 BD-West Elevation
1 : 200

Block D - Part V Apartments



Block D // East Elevation

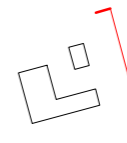
- 1 Brick Type A
- 2 Brick Type B
- 3 Brick Type C
- 4 Pre-Cast Frame Type A
- 5 Pre-Cast Frame Type B
- 6 Selected Render
- 7 Selected Contrasting Render
- 8 Metal Ballustrade
- 9 Double Glazed Window System with Spandrel Panel
- 10 Selected Sedum Roof
- 11 Selected Metal Ventilation Grille



2 BD-East Elevation
1 : 200

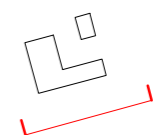
Block D - Part V Apartments

Block D - Crèche



Block D // South Elevation

- 1 Brick Type A
- 2 Brick Type B
- 3 Brick Type C
- 4 Pre-Cast Frame Type A
- 5 Pre-Cast Frame Type B
- 6 Selected Render
- 7 Selected Contrasting Render
- 8 Metal Ballustrade
- 9 Double Glazed Window System with Spandrel Panel
- 10 Selected Sedum Roof
- 11 Selected Metal Ventilation Grille



Block D // North Elevation

- 1 Brick Type A
- 2 Brick Type B
- 3 Brick Type C
- 4 Pre-Cast Frame Type A
- 5 Pre-Cast Frame Type B
- 6 Selected Render
- 7 Selected Contrasting Render
- 8 Metal Ballustrade
- 9 Double Glazed Window System with Spandrel Panel
- 10 Selected Sedum Roof
- 11 Selected Metal Ventilation Grille



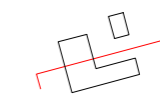
ODR Apartments // East Section-Elevation

- 1 Brick Type A
- 2 Brick Type B
- 3 Brick Type C
- 4 Pre-Cast Frame Type A
- 5 Pre-Cast Frame Type B
- 6 Selected Render
- 7 Selected Contrasting Render
- 8 Metal Ballustrade
- 9 Double Glazed Window System with Spandrel Panel
- 10 Selected Sedum Roof
- 11 Selected Metal Ventilation Grille



ODR Apartments // North Section-Elevation

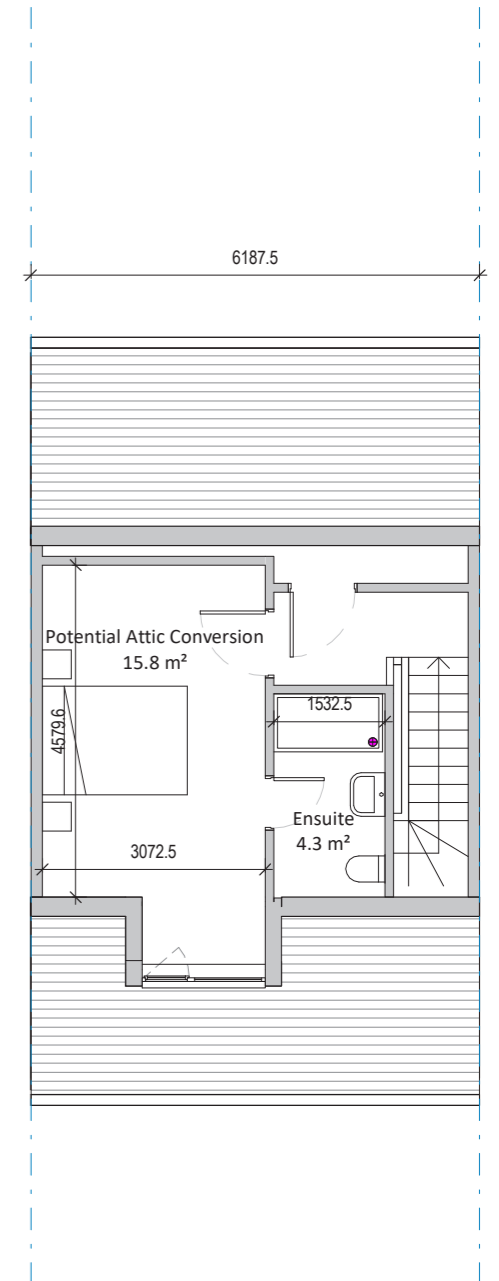
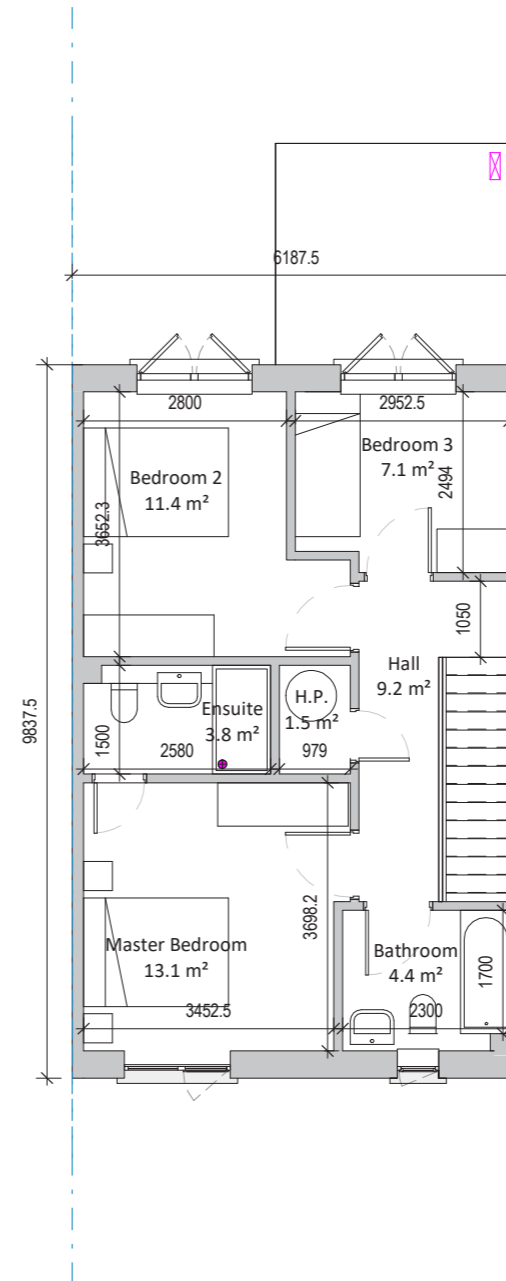
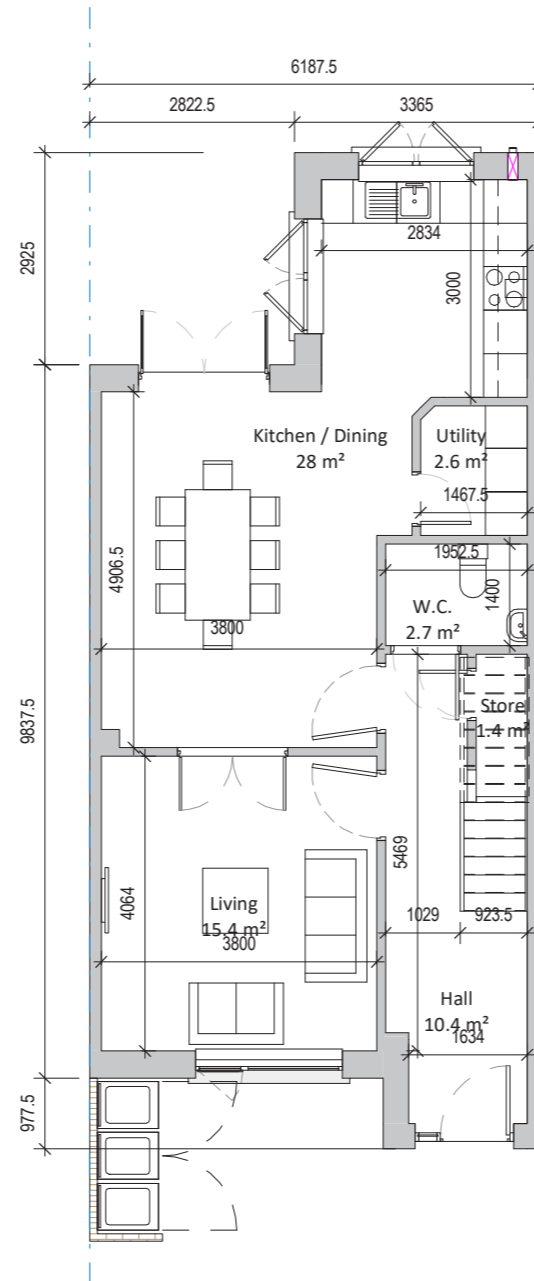
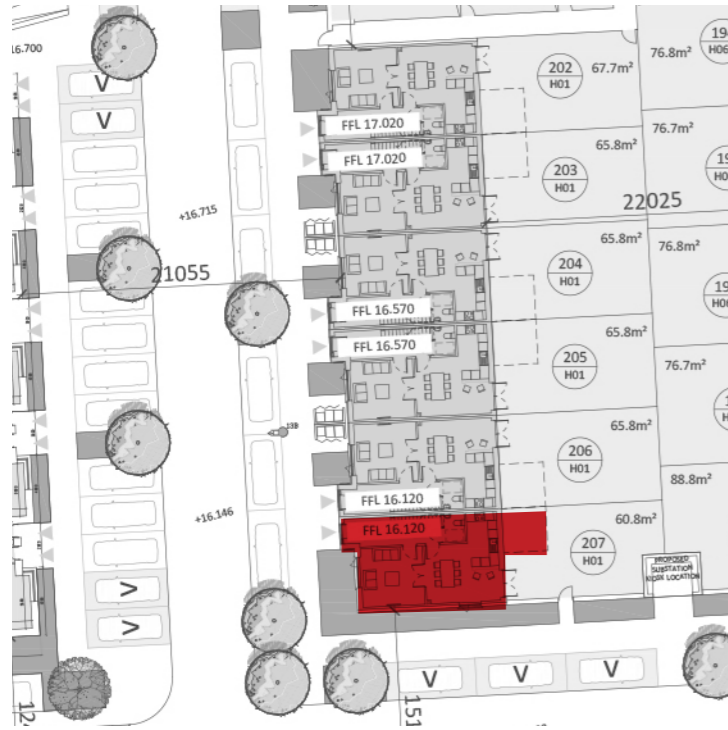
- 1 Brick Type A
- 2 Brick Type B
- 3 Brick Type C
- 4 Pre-Cast Frame Type A
- 5 Pre-Cast Frame Type B
- 6 Selected Render
- 7 Selected Contrasting Render
- 8 Metal Ballustrade
- 9 Double Glazed Window System with Spandrel Panel
- 10 Selected Sedum Roof
- 11 Selected Metal Ventilation Grille



House Type 01 - 4bed

1 no. 4 bed 7 person unit
 1 car parking space
 area: 144.1 sqm

Location



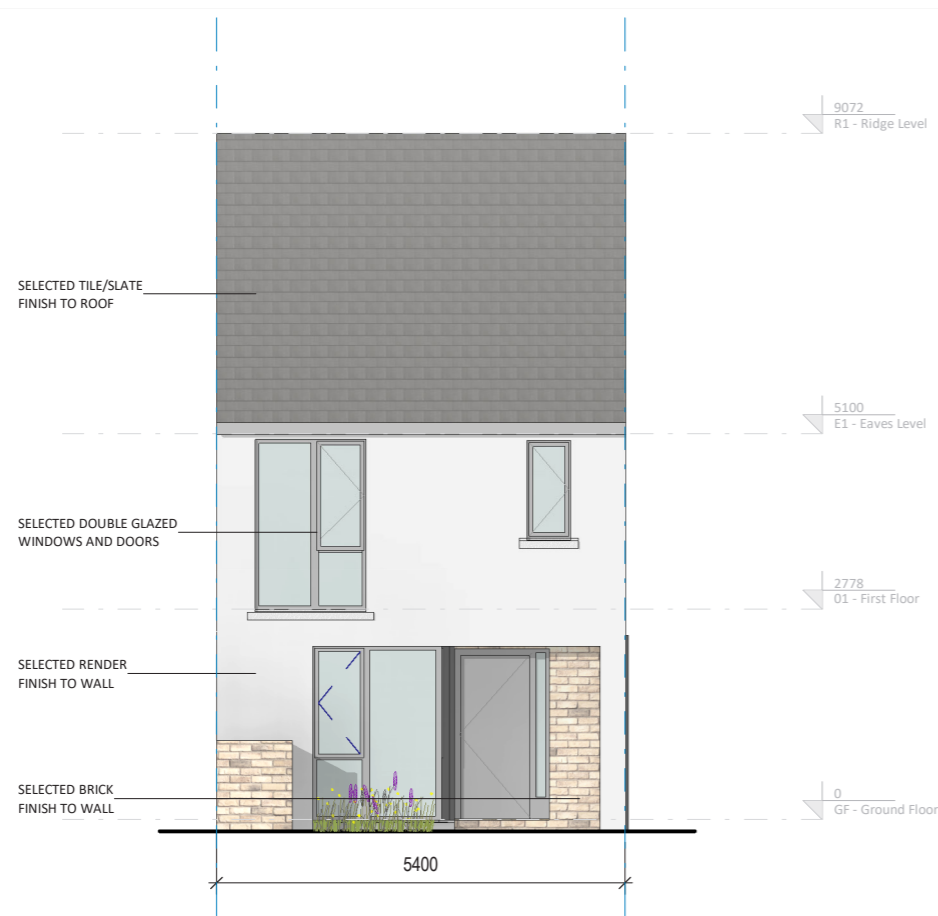
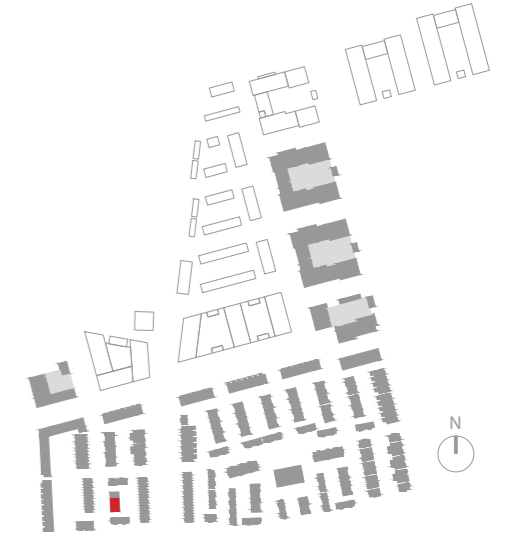
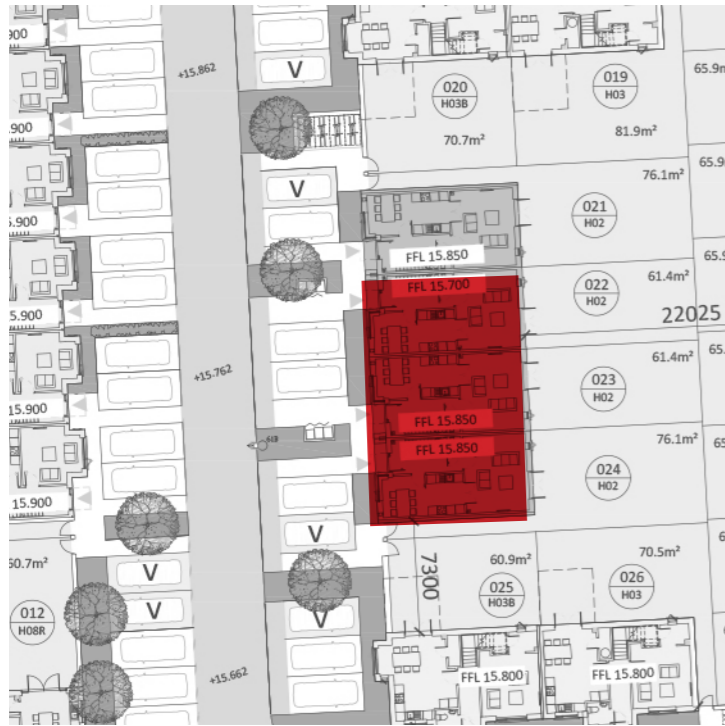
House Type 02 - 3bed

3 no. 3 bed 4 person units

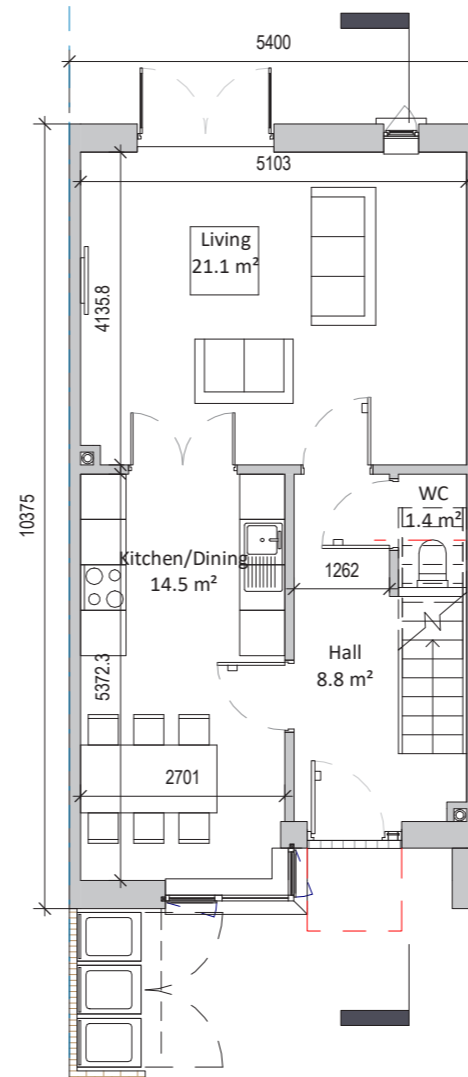
3 car parking spaces

area: 93 sqm.

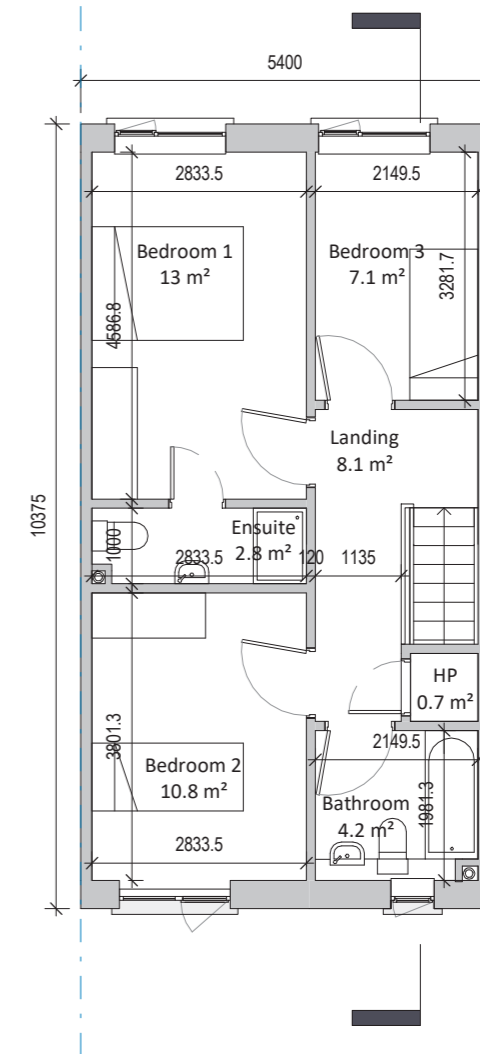
Location



③ H02 Front Elevation
1 : 100



① H02 Level 00
1 : 100



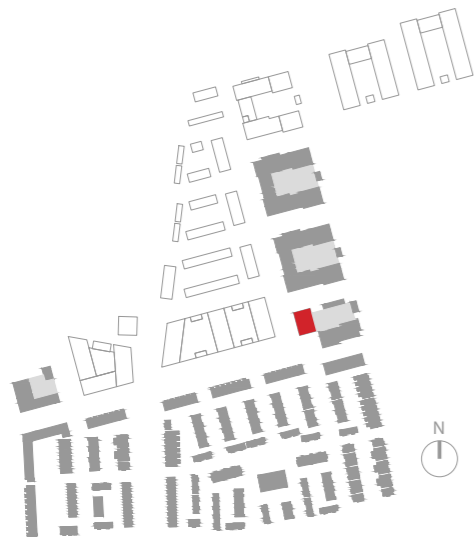
② H02 Level 01
1 : 100

Block A // Part V

22 no. apartments
20 no. on-street car parking spaces

Consisting:
18 no. 2 bed 4 person units
4 no. 1 bed 2 person units

Location

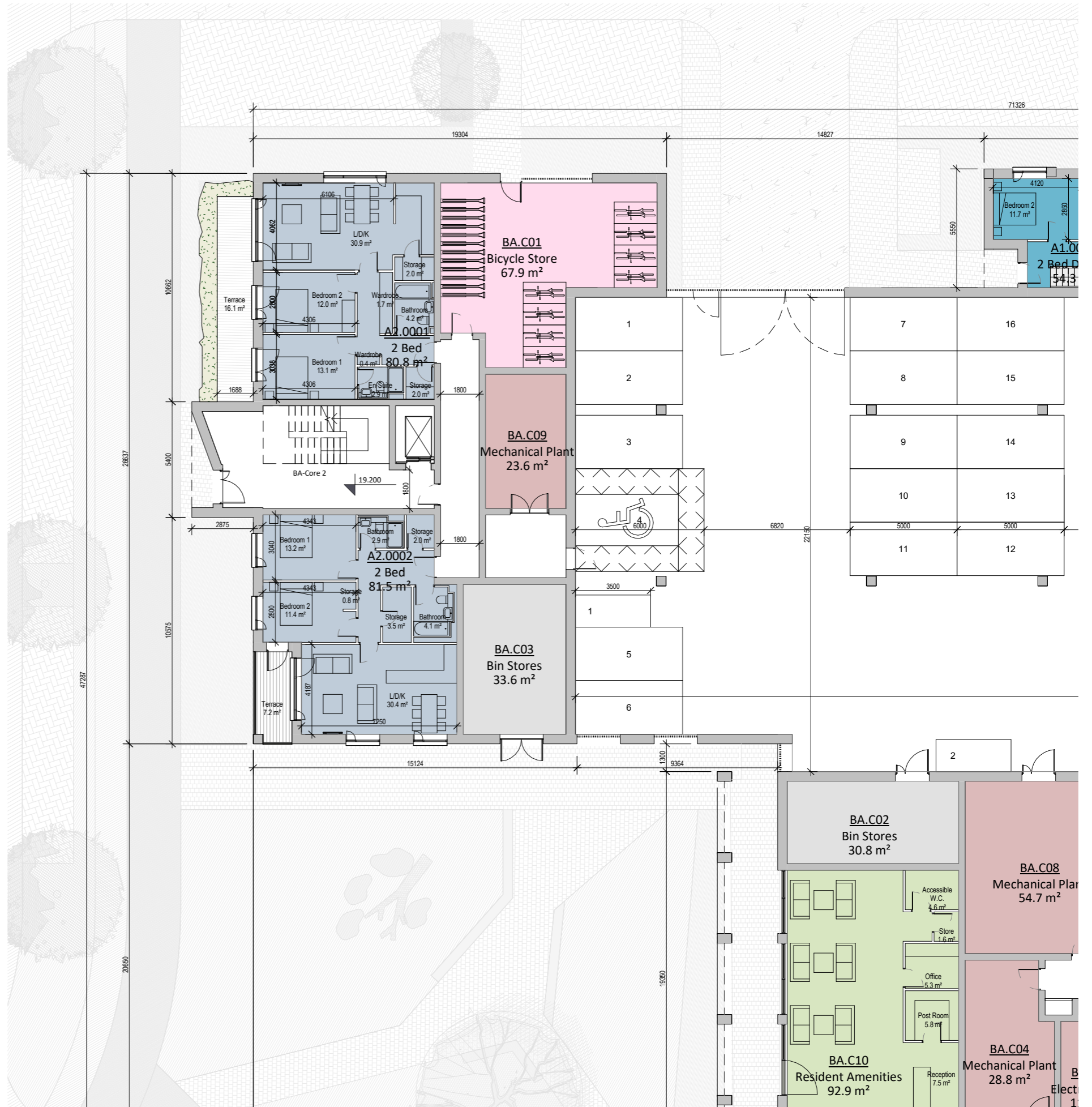
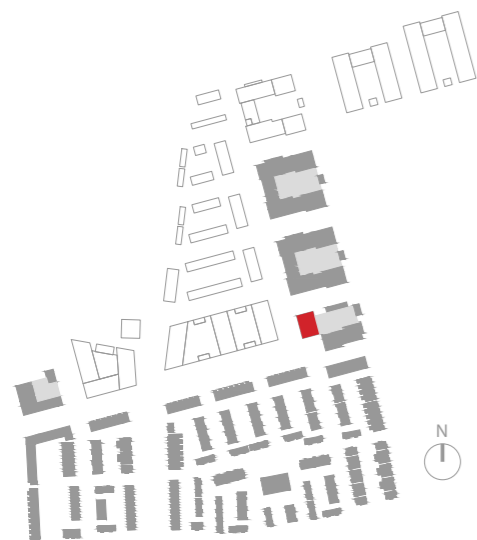


Block A // Level 00

Legend:

- 1 Bed
- 2 Bed
- 2 Bed Duplex
- Bicycle Store
- Bin Stores
- Electrical Plant
- Mechanical Plant
- Resident Amenities

Location

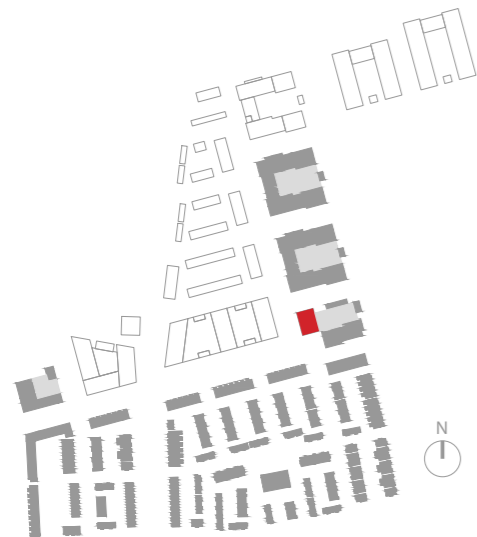


Block A // Level 01

Legend:

- 1 Bed
- 2 Bed
- 2 Bed Duplex

Location

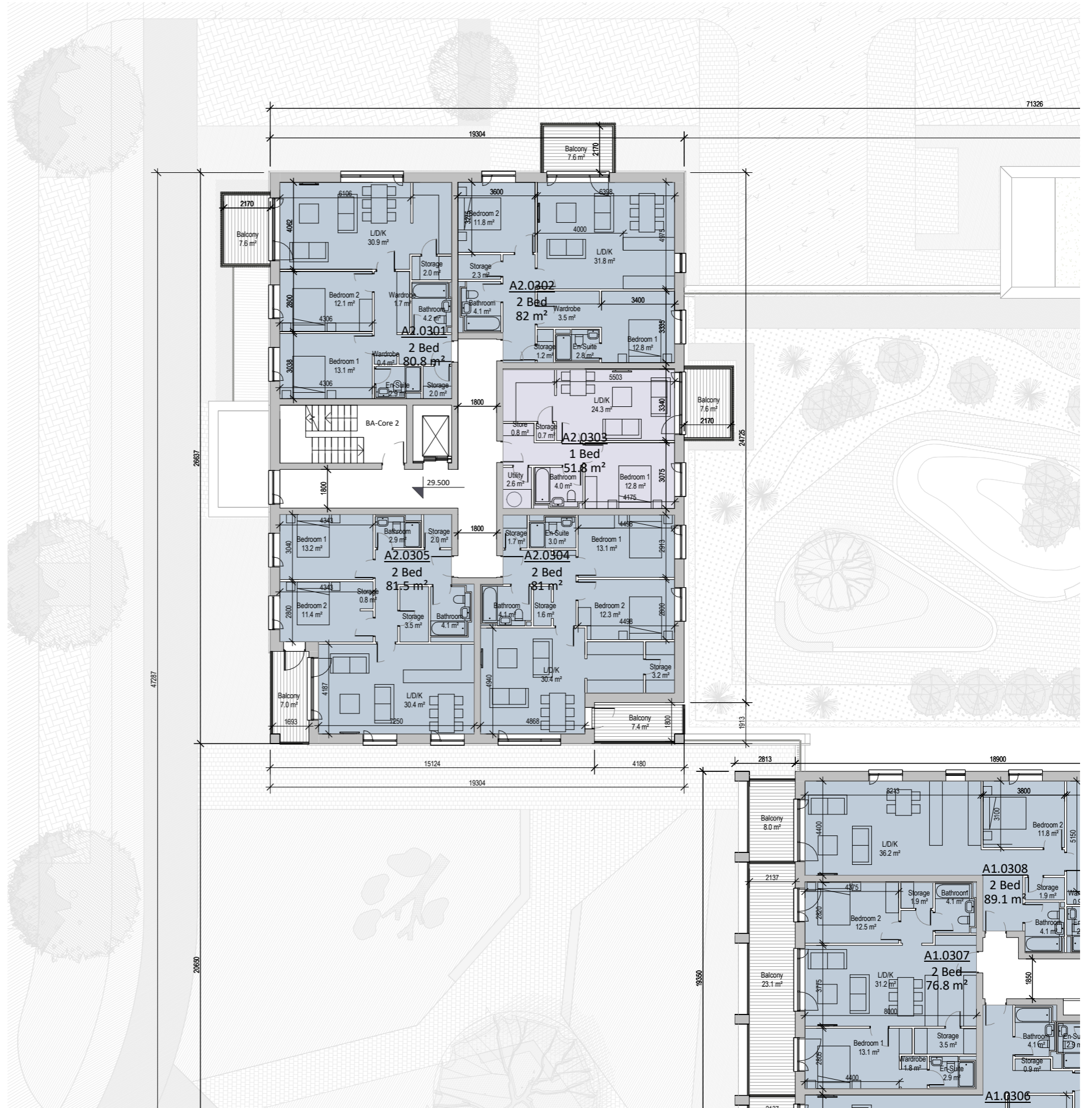
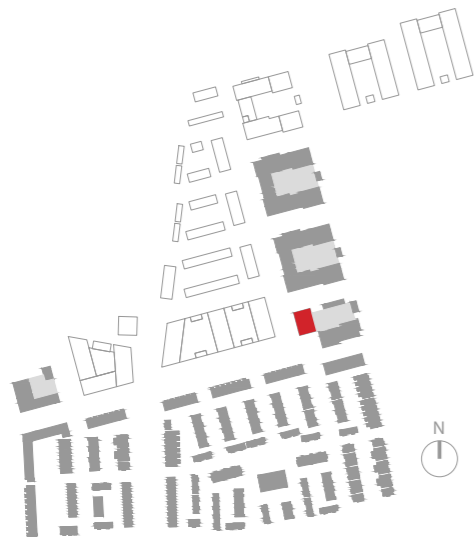


Block A // Levels 02, 03 & 04

Legend:

- 1 Bed
- 2 Bed

Location



Block A // West Elevation

- 1 Brick Type A
- 2 Brick Type B
- 3 Brick Type C
- 4 Pre-Cast Frame Type A
- 5 Pre-Cast Frame Type B
- 6 Selected Render
- 7 Selected Contrasting Render
- 8 Metal Ballustrade
- 9 Double Glazed Window System with Spandrel Panel
- 10 Selected Sedum Roof
- 11 Selected Metal Ventilation Grille



Block A // South Elevation

- 1 Brick Type A
- 2 Brick Type B
- 3 Brick Type C
- 4 Pre-Cast Frame Type A
- 5 Pre-Cast Frame Type B
- 6 Selected Render
- 7 Selected Contrasting Render
- 8 Metal Ballustrade
- 9 Double Glazed Window System with Spandrel Panel
- 10 Selected Sedum Roof
- 11 Selected Metal Ventilation Grille



Block A // East Elevation

- 1 Brick Type A
- 2 Brick Type B
- 3 Brick Type C
- 4 Pre-Cast Frame Type A
- 5 Pre-Cast Frame Type B
- 6 Selected Render
- 7 Selected Contrasting Render
- 8 Metal Ballustrade
- 9 Double Glazed Window System with Spandrel Panel
- 10 Selected Sedum Roof
- 11 Selected Metal Ventilation Grille



Block A // North Elevation

- 1 Brick Type A
- 2 Brick Type B
- 3 Brick Type C
- 4 Pre-Cast Frame Type A
- 5 Pre-Cast Frame Type B
- 6 Selected Render
- 7 Selected Contrasting Render
- 8 Metal Ballustrade
- 9 Double Glazed Window System with Spandrel Panel
- 10 Selected Sedum Roof
- 11 Selected Metal Ventilation Grille



Part V Provision // Schedule

TOTAL PHASE 1 RESIDENTIAL UNITS* 685

OVERALL PHASE 1 MIX		
25	no. 5 bed houses	4% of total units
48	no. 4 bed houses	7% of total units
134	no. 3 bed houses	20% of total units
6	no. 3 bed apartments	1% of total units
23	no. 3 bed duplex	3% of total units
25	no. 2 bed duplex	4% of total units
294	no. 2 bed apartments	43% of total units
130	no. 1 bed apartments	19% of total units
685		100%

Unit Number	Unit Description	Unit Type	Dual Aspect (or More)	Orientation	Bedroom Count	Bedspace	Ceiling Height	Total Area	Req. Total Area	Living Dining Kitchen Area	Req. LDK Area	Living Dining Kitchen Width	Req. LDK Width	Bedroom 1 Area	Bedroom 1 Width	Bedroom 2 Area	Bedroom 2 Width	Bedroom 3 Area	Bedroom 3 Width	Agg. Bedroom Area	Req. Agg. Bedroom Area	Total Storage	Req. Storage Area	Balcony Area	Other Outside Area	Total Private Open Space	Req. Private Open Space
ODR - 3 Storey 10 units																											
ODR01-29	Duplex (3b5p)	Duplex	YES	N/E/W	3	5	3	115	90	34	34	5	4	13	3	10	3	14	4	37	32	9	9		23	23	9
ODR01-30	Duplex (2b4p)	Duplex	YES	N/E/W	2	4	3	106	73	34	30	5	4	12	3	13	3			25	24	9	7	15.8		16	7
ODR01-31	Duplex (3b5p)	Duplex	YES	E/W	3	5	3	115	90	34	34	5	4	13	3	10	3	14	4	37	32	9	9		23	23	9
ODR01-32	Duplex (2b4p)	Duplex	YES	E/W	2	4	2.7	106.4	73	33.7	30	4.74	3.6	11.8	3.2	13.1	3.39			24.9	24.4	8.9	7	15.8		15.8	7
ODR01-33	Duplex (3b5p)	Duplex	YES	E/W	3	5	2.7	115	90	34.2	34	4.82	3.8	13	3.2	10.1	2.7	13.8	3.76	36.9	31.5	9.4	9		22.9	22.9	9
ODR01-34	Duplex (2b4p)	Duplex	YES	E/W	2	4	2.7	106.4	73	33.7	30	4.74	3.6	11.8	3.2	13.1	3.39			24.9	24.4	8.9	7	15.8		15.8	7
ODR01-35	Duplex (3b5p)	Duplex	YES	E/W	3	5	2.7	115	90	34.2	34	4.82	3.8	13	3.2	10.1	2.7	13.8	3.76	36.9	31.5	9.4	9		22.9	22.9	9
ODR01-36	Duplex (2b4p)	Duplex	YES	E/W	2	4	2.7	106.4	73	33.7	30	4.74	3.6	11.8	3.2	13.1	3.39			24.9	24.4	8.9	7	15.8		15.8	7
ODR01-37	Duplex (3b5p)	Duplex	YES	S/E/W	3	5	2.7	115	90	34.2	34	4.82	3.8	13	3.2	10.1	2.7	13.8	3.76	36.9	31.5	9.4	9		22.7	22.7	9
ODR01-38	Duplex (2b4p)	Duplex	YES	S/E/W	2	4	2.7	106.4	73	33.7	30	4.74	3.6	11.8	3.2	13.1	3.39			24.9	24.4	8.9	7	15.8		15.8	7
Block A2 22 units																											
00																											
A2.0001	2 Bed (4p)	AT02F	YES	N/W	2	4	2.6	80.8	73	30.9	30	4.1	3.6	13.1	3	12	2.8			25.1	24.4	6.1	6	16.1		16.1	7
A2.0002	2 Bed (4p)	AT02H	YES	S/W	2	4	2.6	81.5	73	30.4	30	4.2	3.6	13.2	3	11.4	2.8			24.6	24.4	6.3	6	7.2		7.2	7
01																											
A2.0101	2 Bed (4p)	AT02F	YES	N/W	2	4	2.6	80.8	73	30.9	30	4.1	3.6	13.1	3	12.1	2.8			25.2	24.4	6.1	6	7.6		7.6	7
A2.0102	2 Bed (4p)	AT02G	YES	N/E	2	4	2.6	82	73	31.8	30	5	3.6	12.8	3.3	11.8	3.3			24.6	24.4	7	6	7.6		7.6	7
A2.0103	1 Bed	AT01A		E	1	2	2.6	51.8	45	24.3	23	3.3	3.3	12.8	3.1					12.8	11.4	4.1	3	7.6		7.6	5
A2.0104	2 Bed (4p)	AT02W	YES	S/E	2	4	2.4	81	73	30.4	30	4.9	3.6	13.1	2.9	12.3	2.8			25.4	24.4	6.5	6	7.4		7.4	7
A2.0105	2 Bed (4p)	AT02H	YES	S/W	2	4	2.6	81.5	73	30.4	30	4.2	3.6	13.2	3	11.4	2.8			24.6	24.4	6.3	6	7		7	7
02																											
A2.0201	2 Bed (4p)	AT02F	YES	N/W	2	4	2.6	80.8	73	30.9	30	4.1	3.6	13.1	3	12.1	2.8			25.2	24.4	6.1	6	7.6		7.6	7
A2.0202	2 Bed (4p)	AT02G	YES	N/E	2	4	2.6	82	73	31.8	30	5	3.6	12.8	3.3	11.8	3.3			24.6	24.4	7	6	7.6		7.6	7
A2.0203	1 Bed	AT01A		E	1	2	2.6	51.8	45	24.3	23	3.3	3.3	12.8	3.1					12.8	11.4	4.1	3	7.6		7.6	5
A2.0204	2 Bed (4p)	AT02W	YES	S/E	2	4	2.4	81	73	30.4	30	4.9	3.6	13.1	2.9	12.3	2.8			25.4	24.4	6.5	6	7.4		7.4	7
A2.0205	2 Bed (4p)	AT02H	YES	S/W	2	4	2.6	81.5	73	30.4	30	4.2	3.6	13.2	3	11.4	2.8			24.6	24.4	6.3	6	7		7	7
03																											
A2.0301	2 Bed (4p)	AT02F	YES	N/W	2	4	2.6	80.8	73	30.9	30	4.1	3.6	13.1	3	12.1	2.8			25.2	24.4	6.1	6	7.6		7.6	7
A2.0302	2 Bed (4p)	AT02G	YES	N/E	2	4	2.6	82	73	31.8	30	5	3.6	12.8	3.3	11.8	3.3			24.6	24.4	7	6	7.6		7.6	7
A2.0303	1 Bed	AT01A		E	1	2	2.6	51.8	45	24.3	23	3.3	3.3	12.8	3.1					12.8	11.4	4.1	3	7.6		7.6	5
A2.0304	2 Bed (4p)	AT02W	YES	S/E	2	4	2.4	81	73	30.4	30	4.9	3.6	13.1	2.9	12.3	2.8			25.4	24.4	6.5	6	7.4		7.4	7
A2.0305	2 Bed (4p)	AT02H	YES	S/W	2	4	2.6	81.5	73	30.4	30	4.2	3.6	13.2	3	11.4	2.8			24.6	24.4	6.3	6	7		7	7
04																											
A2.0401	2 Bed (4p)	AT02F	YES	N/W	2	4	2.6	80.8	73	30.9	30	4.1	3.6	13.1	3	12.1	2.8			25.2	24.4	6.1	6	7.6		7.6	7
A2.0402	2 Bed (4p)	AT02G	YES	N/E	2	4	2.6	82	73	31.8	30	5	3.6	12.8	3.3	11.8	3.3			24.6	24.4	7	6	7.6		7.6	7
A2.0403	1 Bed	AT01A		E	1	2	2.6	51.8	45	24.3	23	3.3	3.3	12.8	3.1					12.8	11.4	4.1	3	7.6		7.6	5
A2.0404	2 Bed (4p)	AT02W	YES	S/E	2	4	2.4	81	73	30.4	30	4.9	3.6	13.1	2.9	12.3	2.8			25.4	24.4	6.5	6	7.4		7.4	7
A2.0405	2 Bed (4p)	AT02H	YES	S/W	2	4	2.6	81.5	73	30.4	30	4.2	3.6	13.2	3	11.4	2.8			24.6	24.4	6.3	6	7		7	7

Block D 36 units																															
00																															
BD.0001	1 Bed	AT01A		S	1	2	2.6	51.8	45	24	23	3.3	3.3	12.8	3.1					12.8	11.4	4.1	3	5.7		5.7	5				
BD.0002	1 Bed	AT01D		S	1	2	2.6	51.8	45	23	23	4.6	3.3	11.5	3					11.5	11.4	3.9	3	5.6		5.6	5				
BD.0003	1 Bed	AT01C	YES	S/W	1	2	4	55.4	45	23.6	23	3.3	3.3	12.9	2.8					12.9	11.4	4.6	3	8		8	5				
01																															
BD.0101	3 Bed	AT03A	YES	N/S/E	3	5	5.8	96.8	90	34.3	34	4.8	3.8	13.3	2.8	11.6	2.8	7.6	2.1	32.5	31.5	10	9	9.1		9.1	9				
BD.0102	2 Bed (4p)	AT02D		S	2	4	5.8	80.5	73	30.1	30	3.8	3.6	13.3	3.4	11.6	3.1			24.9	24.4	7.3	6	7.6		7.6	7				
BD.0103	2 Bed (4p)	AT02B		S	2	4	2.6	79.1	73	30.1	30	3.8	3.6	13.1	3.1	11.8	2.8			24.9	24.4	8.6	6	7.6		7.6	7				
BD.0104	2 Bed (4p)	AT02C	YES	S/W	2	4	2.6	80.7	73	30.3	30	4.7	3.6	13.3	3.2	11.4	3.2			24.7	24.4	9.5	6	7.6		7.6	7				
BD.0105	2 Bed (4p)	AT02B		W	2	4	2.6	79.1	73	30.2	30	3.8	3.6	13.2	3.1	11.8	2.8			25	24.4	8.6	6	7.6		7.6	7				
BD.0106	1 Bed	AT01A		W	1	2	2.6	51.8	45	24	23	3.3	3.3	12.8	3.1					12.8	11.4	4.1	3	7.6		7.6	5				
BD.0107	2 Bed (4p)	AT02A	YES	N/W	2	4	2.6	74.5	73	30	30	4.8	3.6	11.7	3.2	13	3.8			24.7	24.4	7.7	6	7.6		7.6	7				
BD.0108	1 Bed	AT01B	YES	N/E	1	2	3.1	51.8	45	23.2	23	3.3	3.3	11.4	3					11.4	11.4	3	3	7.5		7.5	5				
BD.0109	3 Bed	AT03B		E	3	5	3	95.2	90	35.5	34	3.8	3.8	13	2.8	11.4	2.8	7.9	2.1	32.3	31.5	9.2	9	9.5		9.5	9				
02																															
BD.0201	3 Bed	AT03A	YES	N/S/E	3	5	5.8	96.8	90	34.3	34	4.8	3.8	13.3	2.8	11.6	2.8	7.6	2.1	32.5	31.5	10	9	9.1		9.1	9				
BD.0202	2 Bed (4p)	AT02D		S	2	4	5.8	80.5	73	30.1	30	3.8	3.6	13.3	3.4	11.6	3.1			24.9	24.4	7.3	6	7.6		7.6	7				
BD.0203	2 Bed (4p)	AT02B		S	2	4	2.6	79.1	73	30.1	30	3.8	3.6	13.1	3.1	11.8	2.8			24.9	24.4	8.6	6	7.6		7.6	7				
BD.0204	2 Bed (4p)	AT02C	YES	S/W	2	4	2.6	80.7	73	30.3	30	4.7	3.6	13.3	3.2	11.4	3.2			24.7	24.4	9.5	6	7.6		7.6	7				
BD.0205	2 Bed (4p)	AT02B		W	2	4	2.6	79.1	73	30.2	30	3.8	3.6	13.2	3.1	11.8	2.8			25	24.4	8.6	6	7.6		7.6	7				
BD.0206	1 Bed	AT01A		W	1	2	2.6	51.8	45	24	23	3.3	3.3	12.8	3.1					12.8	11.4	4.1	3	7.6		7.6	5				
BD.0207	2 Bed (4p)	AT02A	YES	N/W	2	4	2.6	74.5	73	30	30	4.8	3.6	11.7	3.2	13	3.8			24.7	24.4	7.7	6	7.6		7.6	7				
BD.0208	1 Bed	AT01B	YES	N/E	1	2	3.1	51.8	45	23.2	23	3.3	3.3	11.4	3					11.4	11.4	3	3	7.5		7.5	5				
BD.0209	1 Bed	AT01A		E	1	2	2.6	51.8	45	24.2	23	3.3	3.3	13	3.1					13	11.4	4.1	3	8.2		8.2	5				
BD.0210	1 Bed	AT01A		E	1	2	2.6	51.8	45	24.2	23	3.3	3.3	12.9	3.1					12.9	11.4	4	3	8.2		8.2	5				
03																															
BD.0301	3 Bed	AT03A	YES	N/S/E	3	5	5.8	96.8	90	34.3	34	4.8	3.8	13.3	2.8	11.6	2.8	7.6	2.1	32.5	31.5	10	9	9.1		9.1	9				
BD.0302	2 Bed (4p)	AT02D		S	2	4	5.8	80.5	73	30.1	30	3.8	3.6	13.3	3.4	11.6	3.1			24.9	24.4	7.3	6	7.6		7.6	7				
BD.0303	2 Bed (4p)	AT02B		S	2	4	2.6	79.1	73	30.1	30	3.8	3.6	13.1	3.1	11.8	2.8			24.9	24.4	8.6	6	7.6		7.6	7				
BD.0304	2 Bed (4p)	AT02C	YES	S/W	2	4	2.6	80.7	73	30.3	30	4.7	3.6	13.3	3.2	11.4	3.2			24.7	24.4	9.5	6	7.6		7.6	7				
BD.0305	2 Bed (4p)	AT02B		W	2	4	2.6	79.1	73	30.2	30	3.8	3.6	13.2	3.1	11.8	2.8			25	24.4	8.6	6	7.6		7.6	7				
BD.0306	1 Bed	AT01A		W	1	2	2.6	51.8	45	24	23	3.3	3.3	12.8	3.1					12.8	11.4	4.1	3	7.6		7.6	5				
BD.0307	2 Bed (4p)	AT02A	YES	N/W	2	4	2.6	74.5	73	30	30	4.8	3.6	11.7	3.2	13	3.8			24.7	24.4	7.7	6	7.6		7.6	7				
BD.0308	1 Bed	AT01B	YES	N/E	1	2	3.1	51.8	45	23	23	3.2	3.3	11.5	3.1					11.5	11.4	3.1	3	7.5		7.5	5				
BD.0309	1 Bed	AT01A		E	1	2	2.6	51.8	45	24.2	23	3.3	3.3	13	3.1					13	11.4	4.1	3	8.2		8.2	5				
BD.0310	1 Bed	AT01A		E	1	2	2.6	51.8	45	24.2	23	3.3	3.3	13	3.1					13	11.4	4.1	3	8.2		8.2	5				
04																															
BD.0401	3 Bed	AT03A	YES	N/S/E	3	5	5.8	96.8	90	34.3	34	4.8	3.8	13.3	2.8	11.6	2.8	7.6	2.1	32.5	31.5	10	9	9.1		9.1	9				
BD.0402	2 Bed (4p)	AT02D		S	2	4	5.8	80.5	73	30.1	30	3.8	3.6	13.3	3.4	11.6	3.1			24.9	24.4	7.3	6	7.6		7.6	7				
BD.0403	2 Bed (4p)	AT02B		S	2	4	2.6	79.1	73	30.1	30	3.8	3.6	13.1	3.1	11.8	2.8			24.9	24.4	8.6	6	7.6		7.6	7				
BD.0404	2 Bed (4p)	AT02E	YES	N/S/W	2	4	2.6	83.6	73	30.8	30	4.9	3.6	13.3	3.1	11.6	3.4			24.9	24.4	9.5	6	14.1		14.1	7				
Houses 4 units																															
Unit Number	Unit Description	Unit Type	Dual Aspect (or More)	Orientation	Bedroom Count	Bedspaces	Ceiling Height	Total Area	Req. Total Area	Living Dining Kitchen Area	Req. LDK Area	Living Dining Kitchen Width	Req. LDK Width	Bedroom 1 Area	Bedroom 1 Width	Bedroom 2 Area	Bedroom 2 Width	Bedroom 3 Area	Bedroom 3 Width	Bedroom 4 Area	Bedroom 4 Width	Bedroom 5 Area	Bedroom 5 Width	Agg. Bedroom Area	Req. Agg. Bedroom Area	Total Storage	Req. Storage Area	Balcony Area	Other Outside Area	Total Private Open Space	Req. Private Open Space
22		H02	YES		3	4	2.4	96.4	83	35.6	30	3.8	3.8	13	2.8	10.8	2.8	7.1	2.1					30.9	28	Attic	4			61.4	60
23		H02	YES		3	4	2.4	96.4	83	35.6	30	3.8	3.8	13	2.8	10.8	2.8	7.1	2.1					30.9	28	Attic	4			61.4	60
24		H02	YES		3	4	2.4	96.4	83	35.6	30	3.8	3.8	13	2.8	10.8	2.8	7.1	2.1					30.9	28	Attic	4			61.4	60
207		H01E	YES		4	7	2.7	144.1	120	43.4	40	3.8	3.8	13.1	3.3	11.4	2.9	7.1	2.5	15.4	3			47	43	4.5 + Attic	5			60.8	75
Part V Mix																															
	1-bed apartments																														17
	2-bed apartments																														36
	2-bed duplex																														5
	3-bed apartments																														5
	3-bed duplex																														5
	3-bed house																														3
	4-bed house																														1
Total																															72